

STATISTICAL REPORT



INSIDE THIS ISSUE:

<i>January Census Data</i>	2
<i>Homeless Survey</i>	3
<i>Survey Statistics</i>	3
<i>More Survey Statistics</i>	4

KANSAS CITY, MISSOURI

On Wednesday, January 24, 2007 the HSC conducted an extensive 24 hour point in time census to capture the number of homeless individuals living in the Kansas City Metropolitan area. This area includes Jackson, Clay and Platte counties in Missouri, and Johnson and Wyandotte counties in Kansas. The goal of the census is to determine the number of people who need, are receiving, or requesting homeless services in a single 24 hour period of time. The census helps our community better understand the needs of its citizens who are homeless and obtains new data for strategic planning to reduce and eventually eliminate homelessness.

Over 80 social service agencies, emergency shelters, transitional housing programs, and outreach programs participated in this census. With the support of a grant from the Kauffman Fund, HSC was able to hire a Point

in Time Coordinator to organize and facilitate the count. Additionally, through this grant HSC was able to hire enumerators to conduct the street count and to facilitate distribution and completion of the survey in shelters. HSC staff and enumerators distributed hundreds of surveys to families and individuals who are homeless or near homelessness. Individuals were asked to answer several questions about their housing situation, use of social services, and demographic information. The survey helped HSC and participating agencies get a clearer picture of challenges facing people who are homeless in our community, while assessing the strengths and areas of improvement needed for the community's social service



Gathering the Data!

agencies. In July, HSC collaborated with area outreach workers, emergency shelters, transitional housing programs, and supportive housing programs to count the number of people using shelters in the community. Each agency counted the number of people using shelters in a 24 hour period of time. HSC compared the total count from this census to the total from the January census to determine which part of year shelter use is at its highest.

Kansas City, Jackson County Comparison Chart January vs. July Point-in-Time Census	Individuals		Family Units		Children		Total # in Families		Unaccompanied Under 18	
	Jan	July	Jan	July	Jan	July	Jan	July	Jan	July
	Streets/Unsheltered	131	118	6	0	13	0	23	0	0
Emergency Shelter	489	508	95	92	198	204	307	303	4	4
Transitional Shelter	191	286	115	101	269	219	390	336	4	5
Permanent Supportive Housing	359	412	171	161	416	329	606	528	0	0
Totals	1170	1324	401	354	896	752	1326	1167	8	14

JANUARY 24, 2007 CENSUS: A 24 HOUR POINT-IN-TIME SNAPSHOT OF HOMELESSNESS

The numbers to the right give a snapshot of homelessness. According to MAACLink, our community's homeless information management system, there are 13, 899 unduplicated homeless people over the course of a year. Even that number vastly under-represents the true extent of the problem as not all homeless serving agencies enter data into MAACLink.

INDIVIDUALS	TOTAL INDIVIDUALS	FEMALE ADULTS	MALE ADULTS	FEMALE YOUTH UNDER 18	MALE YOUTH UNDER 18
EMERGENCY SHELTER	489	96	385	4	4
TRANSITIONAL SHELTER	191	51	135	4	1
PERMANENT SUPPORTIVE HOUSING	359	128	231	0	0
STREETS (OTHER NON SHELTERED/HOUSED)	131	21	110	0	0
TOTAL	1170	296	861	8	5

PERSONS IN FAMILIES WITH CHILDREN	TOTAL FAMILY UNITS (NUMBER OF FAMILIES)	TOTAL NUMBER OF PERSONS IN FAMILIES	TOTAL NUMBER OF CHILDREN IN FAMILIES	SINGLE PARENT FEMALE HEADED FAMILIES	SINGLE PARENT MALE HEADED FAMILIES	2 PARENT FAMILY UNITS
EMERGENCY SHELTER	95	307	198	79	2	14
TRANSITIONAL HOUSING	115	390	269	103	6	6
PERMANENT SUPPORTIVE HOUSING	171	606	416	135	17	19
STREETS (OTHER NON-SHELTERED, NON-HOUSED)	6	23	13	1	1	4
TOTAL	387	1,326	896	318	26	43

CHRONIC OR PERSISTENT HOMELESSNESS	INDIVIDUALS	
	SHELTERED HOMELESS	STREET HOMELESS
CHRONIC HOMELESSNESS	302	100
PERSISTENT HOMELESSNESS	324	



SELF - REPORT STATISTICS

1,664 HOMELESS SURVEYS COMPLETED

The Coalition, with a grant from the Kauffman Fund, had the unique opportunity to hire enumerators (survey administrators) who were graduate students, homeless and formerly homeless individuals.



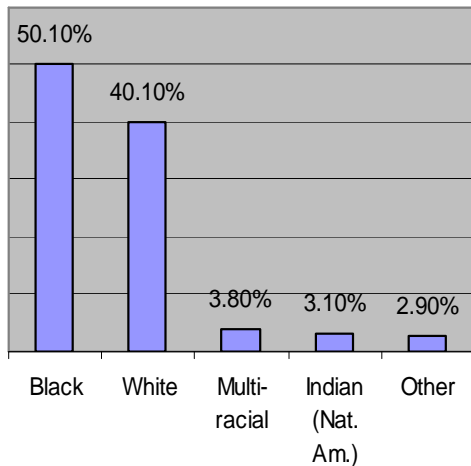
There are a couple of points of import: first, a higher percentage of single individuals than families completed the survey; and second, only 65.9% of those counted in the census

completed a survey.

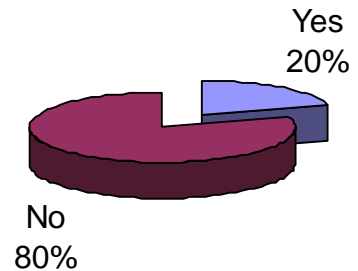
These instruments provided a unique set of data from the consumer perspective regarding their perceptions of such issues as why they became homeless; income sources; gaps in services; and transportation needs.

Average Monthly Income:
 Year 2006 \$583.81
 Year 2007 \$353.86

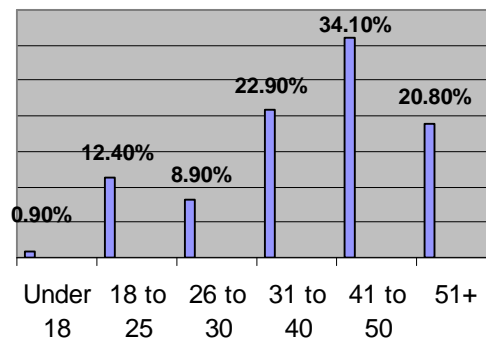
Race



Veteran Status



Age Range



Characteristics of Homelessness

Variable	Kansas City, Jackson, Co	
	N	%

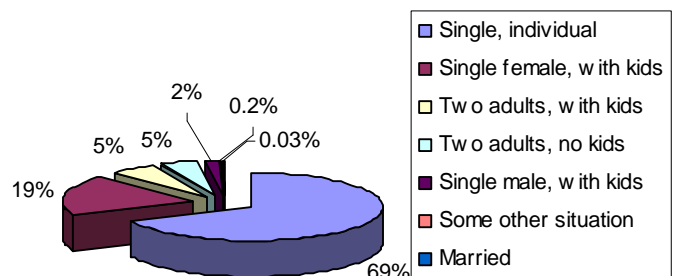
Come to county already homeless?:

Yes	215	24.7%
No	657	75.3%

How long homeless, this time?

< 7 days	112	13.1%
1 month to 1 year	492	57.4%
1 to 5 years	206	24.0%
6 or more years	47	5.5%

Family Status

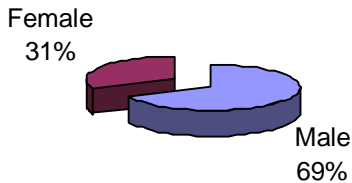


Needs Indicated by Survey Respondents

Mental health/emotional needs	30.1%
Help with severe mental disability	7.0%
Developmental or learning disability	3.7%
Chronic alcohol abuse	13.2%
HIV/AIDS	4.2%
Tuberculosis	5.6%
Other physical illness	8.9%
Domestic violence	13.5%

*Survey respondents could indicate more than one need.

Homeless 1+ Years Gender

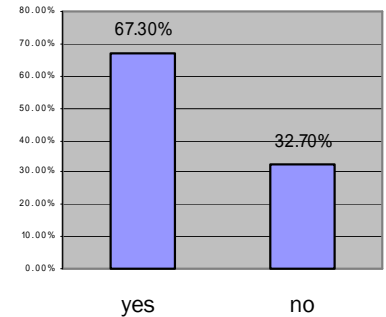


Sources of Income

Job	28.1%
Family/friends	15.1%
Food stamps	39.5%
Social Security	6.2%
Pension	0.7%
Unemployment	2.1%
Child support	3.2%
Asking for money on the streets	7.0%
TANF	7.7%
SSI/SDI	9.2%
Veterans benefits	1.9%
Selling blood/plasma	4.5%
Prostitution	0.4%
Old age pension	0.2%
Medicare	10.2%
Other	4.0%

*Survey respondents could indicate more than one source of income.

Is Lack of Adequate Transportation a Root Cause of Homelessness?



Self Reported Reasons for Becoming Homeless

Eviction	49.8%
Unemployment	41.3%
Moved	7.6%
Illness	9.8%
Substance abuse	26.8%
Emotional disorder or mental illness	14.4%
Developmental disability	2.4%
Aged out of foster system	0.5%
Physical disability or illness	7.4%
Domestic violence	18.1%
Child abuse	0.3%
Discharge from prison/jail	11.0%
Welfare sanctions	3.7%
Discrimination	1.8%
Fire/flood/natural disaster	1.8%
Family rejection	18.2%
Bad credit history	0.0%



HSC
HOMELESS SERVICES COALITION
OF GREATER KANSAS CITY

3200 Wayne, Suite 209
Mohart Multipurpose Center
Kansas City, Missouri 64109

Phone: 816.924.7997
Fax: 816.924.7994
E-mail: clarcom@hscgkc.org

We're on the web:
www.HSCGKC.org

*Ending homelessness by
leading metro wide
advocacy, collaboration,
funding and training
initiatives.*